



Members of the European beet sugar chain sign up for a joint sustainability partnership.

European beet sugar production has achieved high levels of sustainability through **continuous improvement in all three dimensions of sustainability (economic, environmental and social) in recent decades**. Their more recent sustainability performance is notably recorded in the joint environmental and social projects set up in the last decade and still ongoing today. Striving to go further in their joint efforts to consolidate sustainable beet sugar production, European beet growers, sugar producers and trade unions of the food and agriculture sector have agreed to jointly identify and report on representative '**Good Practices of sustainable production of beet sugar in the EU**'.

In line with the **Europe 2020** strategy for a '*smarter, more sustainable and more inclusive growth*' for the EU, the partnership agreement aims to highlight and facilitate further the dissemination **good agricultural, industrial, social and environmental practices** in the sector, while taking into account the relevant elements of **economic sustainability** providing stable and reliable beet sugar production in the EU. Through a common understanding of what constitutes sustainable production of beet sugar in Europe, the partners aim to:

1. Facilitate the **access to and dissemination of knowledge** regarding sustainable practices in the sector.
2. Help **to consolidate sustainable practices in EU beet growing and processing**.
3. Provide **a platform for future dialogue** in the field of sustainability with other sector stakeholders.

The partners will be working together, engaging in a constructive dialogue and exchange with third parties, while managing the overall process so as to deliver **meaningful results** for the sector. Background information on the agreement can be found overleaf.

-Ends-

Notes for editors:

CIBE, founded in 1927, represents 440 000 sugar beet growers from 16 EU sugar beet producing countries plus Switzerland and Turkey.

CEFS, founded in 1953 represents all European beet sugar manufacturers and cane sugar refiners, covering sugar production in 20 EU countries plus Switzerland.

EFFAT results from the merger of two European federations (ECF-IUF and EFA) in 2000. It represents 120 national trade unions from 35 European countries, defending the interests of more than 2.6 million members in the food, agriculture and tourism sectors.

Enquiries:

CIBE (International Confederation of European Beet Growers) - Tel: +32 2 504 6090

CEFS (Comité Européen des Fabricants de Sucre) - Tel : +32 2 762 0760

EFFAT (European Federation of Food, Agriculture and Tourism Trade Unions) Tel: +32 2 218 77 30



European Beet Sugar Sustainability Partnership

Partners' Public Statement

October 2013

The European beet growers (CIBE), sugar producers (CEFS) and trade unions of the food and agriculture sector (EFFAT) have formalised a landmark agreement to jointly highlight and report on representative ***Good Practices of sustainable production of beet sugar in the EU.***

Why sustainability?

Sustainability is a multidimensional concept that encompasses economic viability, environmental protection and social responsibility. With its flagship ***'Europe 2020 strategy'*** the EU has put sustainability at the heart of the European project with the purpose of creating conditions of ***growth that is 'smarter, more sustainable and more inclusive'***.

This partnership agreement between European beet growers, sugar producers and trade unions in the beet sugar sector aims to report on ***good agricultural, industrial, social and environmental practices for the sector*** while taking into account the relevant elements of ***economic viability*** needed for stable and reliable beet sugar production in the EU.

Why now?

European beet sugar production has achieved high levels of sustainability through ***continuous improvement in all three dimensions of sustainability (economic, environmental and social) in recent decades.*** Their more recent sustainability performance is recorded in the joint environmental and social projects set up in the last decade and still ongoing (see 'further reading' section at the end of this document).

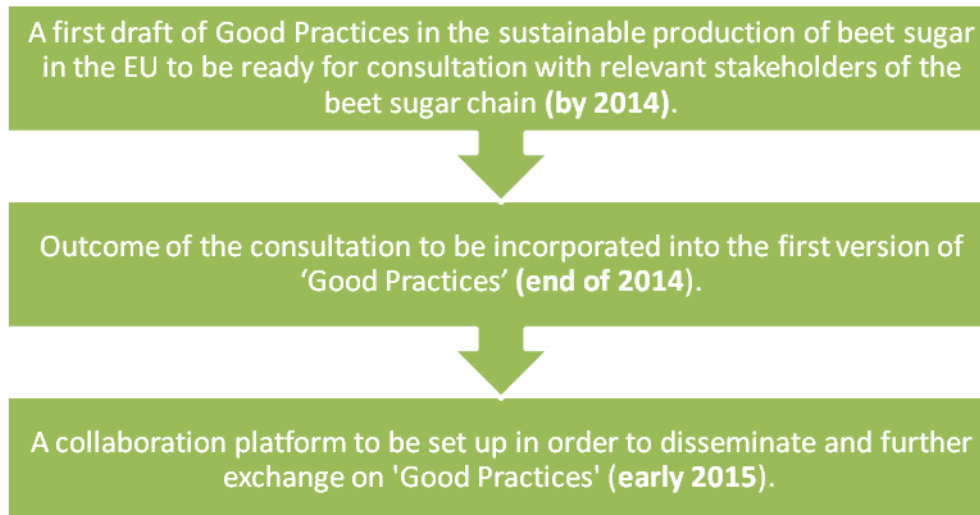
The three partners of the European beet sugar sector acknowledge that in order to ensure the long-term sustainability of their sector they must continue to develop and disseminate good practices that support the consolidation of sustainable practices in EU beet growing and processing. Hence, through a common understanding of what constitutes sustainable production of beet sugar in Europe, ***the partners' aims are:***

1. To facilitate the ***access to and dissemination of knowledge*** regarding sustainable practices in the sector.
2. To help ***consolidate sustainable practices in EU beet growing and processing.***
3. To provide ***a platform for future dialogue*** in the field of sustainability with other sector stakeholders.

How will the project be carried out?

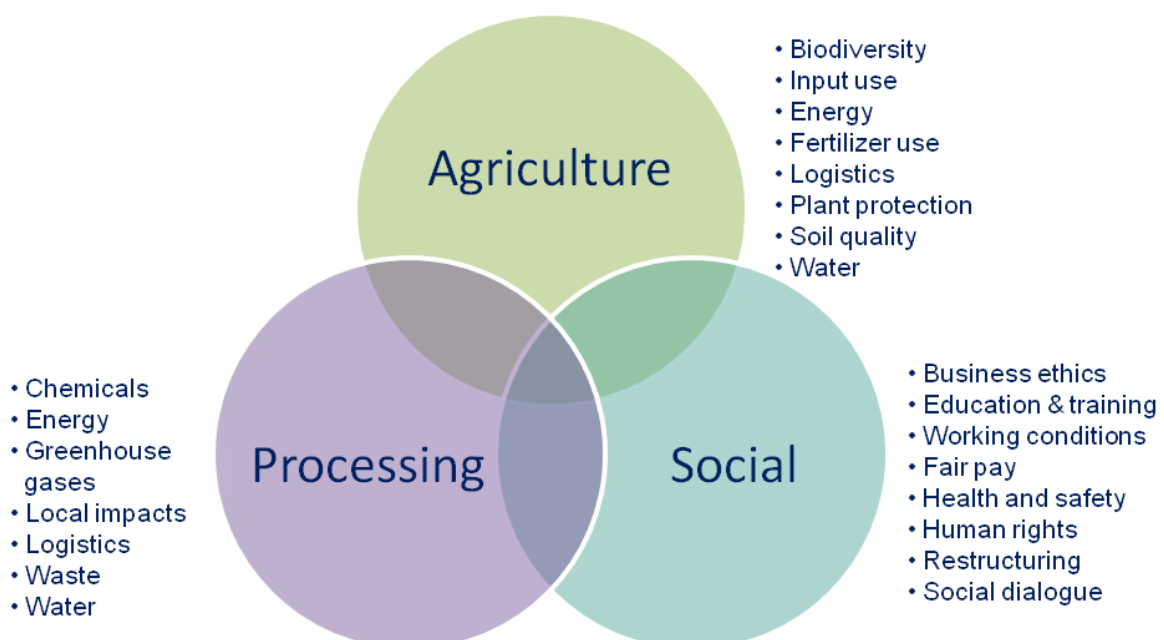
The partners have agreed to create a working platform, including a **steering committee and three technical working groups**, covering notably agriculture, industrial and social aspects of beet sugar production in Europe. In addition, partners intend to involve **external expertise** to provide independent advice for this partnership.

The partners will be working together, engaging in **a constructive dialogue and exchange with other stakeholders**, while managing the overall process to deliver a **concrete outcome** for the sector within the following **timeline**:



What topics will be dealt with in this sustainability partnership?

Although only the joint work of the partners and, later on, the consultation of stakeholders will determine the final outcome of this joint work, the partners have agreed that as many topics as possible should be looked at, including at least the following:



Further reading:

In order to know more about the European beet sugar chain partners and their sustainability and Corporate Social Responsibility record, you can refer to the following documents:

- EFFAT-CEFS annual Corporate Social Responsibility (CSR) implementation reports (2003-2012):
 - o <http://www.eurosugar.org/en/resp.html>
 - o <http://www.comitesucre.org/site/sustainable-development/social-responsibility/>
- CIBE-CEFS joint reports on environmental sustainability (2003, 2010):
 - o <http://www.comitesucre.org/site/sustainable-development/environment/>
 - o <http://www.cibe-europe.eu/brochures.aspx>
- Study on 'The Carbon Footprint of EU Beet Sugar' (2012):
 - o <http://www.comitesucre.org/site/the-product-carbon-footprint-of-eu-beet-sugar/>

Contacts:



CIBE (International Confederation of European Beet Growers)

111/9 Boulevard Anspach
1000 Brussels
cibeoffice@cibe-europe.eu
Tel: +32 2 504 6090
Fax: +32 2 504 6099
www.cibe-europe.eu

CIBE, founded in 1927, represents 440 000 sugar beet growers from 16 EU sugar beet producing countries plus Switzerland and Turkey.

CEFS (Comité Européen des Fabricants de Sucre)

182 Avenue Tervuren
1150 Brussels
cefs@cefs.org
Tel: +32 2 762 0760
Fax: +32 2 771 0026
www.cefs.org
www.eurosugar.org

CEFS, founded in 1953 represents all European beet sugar manufacturers and cane sugar refiners, covering sugar production in 20 EU countries plus Switzerland.

EFFAT (European Federation of Food, Agriculture and Tourism Trade Unions)

Rue du Fossé-aux-Loups 38,
Box 3, B-1000 Brussels
effat@effat.org
Tel: +32 2 218 77 30
Fax: +32 2 218 30 18
www.effat.eu
www.eurosugar.org

EFFAT results from the merger of two European federations (ECF-IUF and EFA) in 2000. It represents 120 national trade unions from 35 European countries, defending the interests of more than 2.6 million members in the food, agriculture and tourism sectors.